

# Religious festival

Coffs Harbour hosted a major religious festival this week.

More than 1000 members of the World Life Church of God gathered for daily prayers, singing and addresses in the Coffs Harbour civic centre.

They came mainly from southern Queensland and the North Coast.

For the previous two years they had held their festivals in Port

Macquarie, but the church decided on Coffs Harbour this year.

A spokesman for the festival, the 50th anniversary of the Feast of the Tabernacles, had been simultaneously observed at 50 locations throughout the world in the past week.

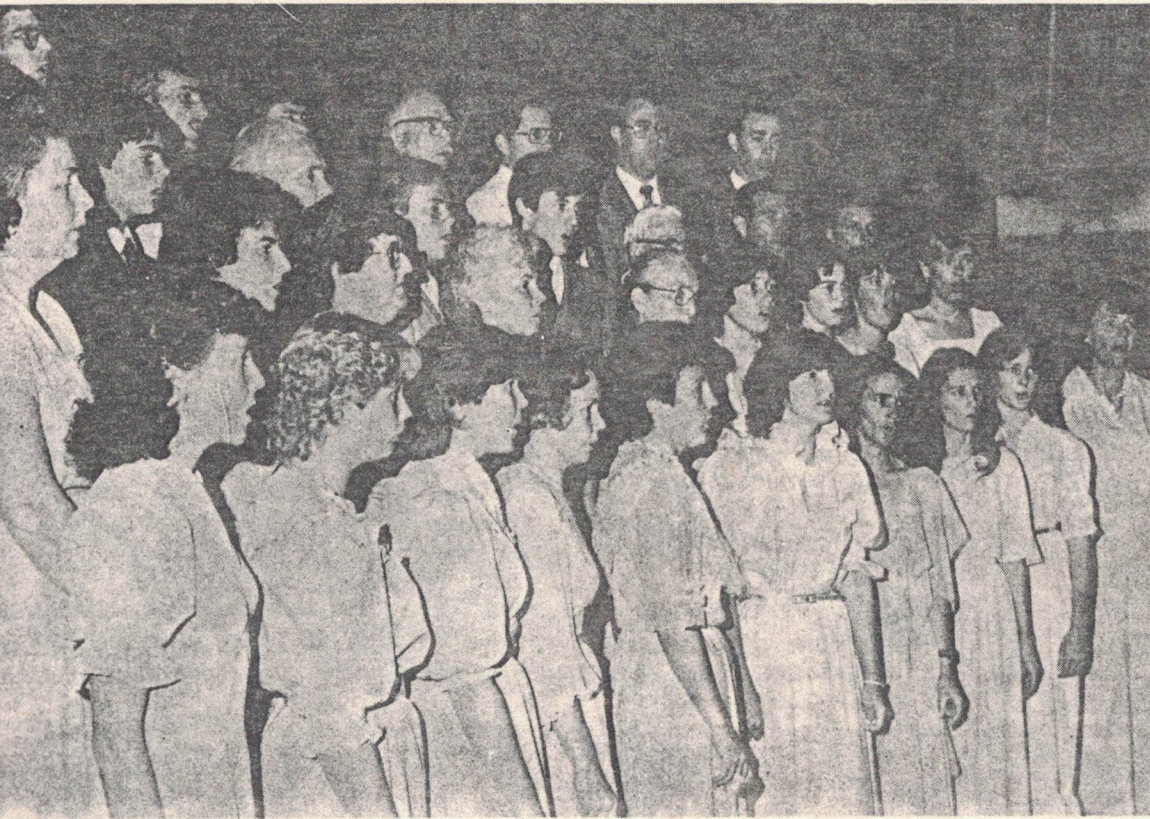
The spokesman said the original feast had been staged by the Israelites who fled from Egypt.

The World Wide Church of God had started in Australia in 1958 and had 5000 members, with its headquarters at Burleigh Heads.

It is a fundamentalist religion and teaches the Bible literally.

Its members observe the Sabbath from sunset on Fridays to sunset on Saturdays.

**BELOW: The Church of God choir singing at the Coffs Harbour civic centre this week.**



# Course on how to grow native plants

There is an increasing interest in broadening the range of native plants grown in gardens. With the inevitable limitation of space with which home gardeners are confronted the demand for smaller plants is also increasing.

John Wrigley, one of Australia's foremost experts on the subject and author of the book *Australian Native Plants* will discuss a wide spectrum of lesser known native plants in a course on *Native Rockery Plants*

and Ground Covers organised by the University of New England's Department of Continuing Education in Coffs Harbour.

There will be a range of unusual rockery plants and ground covers on display at the course, which will be held at the University of New England's office at the corner of Park Avenue and Earl Street, Coffs Harbour, over the weekend of October 8 and 9. The fee is \$30.

## Stamp Week

**National Stamp Week 1983 begins on Monday.**

Four new 30 cent stamps featuring Explorers of Australia will be released to coincide with the beginning of Stamp Week. Some of Australia's most daring inland explorers are portrayed on the stamps: Burke and Wills, Alexander Forrest, Ludwig Leichhardt and Sir Paul Strzelecki.